

Methodology for the collection and valorisation of the T&A heritage



TABLE OF CONTENTS

Introduction.....	3
1. Methodology for collecting the content of TEXMEDIN digital library	5
1.1 Criteria according to project objectives.....	5
1.2 Criteria according to museums/partners specialization and priorities....	6
1.3 Criteria in order to collect item representing better the identity features, T&A sector evolution and knowledge of each territory	7
1.4 Criteria according to possible future uses of the knowledge base.....	7
2. TEXMEDIN digital library	8
2.1. TEXMEDIN Vocabulary.....	8
2.2. Database structure	9
2.2.1. Data Types	11
2.2.2. Database fields descriptions	12
2.2.3. Additional tables for each item.....	14
2.3. User Interface.....	16
2.3.1. Data insertion interface.....	16
2.3.2. Final user Interface.....	20
2.3.3. Searching the database	20
2.3.4. Browse database.....	22
2.3.5 Photos of the item	25
2.3.6. User's Themes.....	26
3. Valorisation of the Knowledge Base.....	27

Introduction

A digital library consists of digital objects that are selected and organized to facilitate their discovery, access, and use. The database of the objects and the user interface together create the user experience of a collection. There are no absolute rules for creating good digital collections. Every digital collection-building initiative is unique, with its own users, goals, and needs. In the current document, entitled "Methodology for the collection and digitalisation of the T&A heritage" the common methodological guidelines adopted by the partners for the selection, collection, digitalisation, presentation and valorisation of the T&A heritage will be summarised. The objective is to develop a shared digital library (Component 3) addressed to young stylist, designers, fashion schools and textile enterprises. The digital library will be one of the main tools provided to the users of Inspiring Labs (Component 4).

There are some general principles, widely accepted, that apply to the development of a good digital library. These principles can be grouped in two categories. The first category deals with the policy for the selection of the library content and the second group with the development of the database and the user interface.

A. Selection policy principles for a good digital library:

1. A good digital library is created according to an explicit collection development policy.
2. A good collection respects intellectual property rights
3. A good collection is curated, which is to say, its resources are actively managed during their entire lifecycle.
4. A good collection is sustainable over time.

B. Database and user interface principles for a good digital library:

1. A good collection is broadly available and avoids unnecessary impediments to use. Collections should be accessible to persons with disabilities, and usable effectively in conjunction with adaptive technologies.
2. A good collection should be described so that a user can discover characteristics of the collection, including scope, format, restrictions on access, ownership, and any information significant for determining the collection's authenticity, integrity, and interpretation.
3. A good collection has mechanisms to supply usage data and other data that allows standardized measures of usefulness to be recorded.
4. A good collection is interoperable.
5. A good collection integrates into the users own workflow.

The TEXMEDIN digital library will be developed starting from these guidelines. Nevertheless, the final structure of the library may change, following the different suggestions and requests emerged from the project workgroup that will feed the content of the library.

The structure of the deliverable, based on the description on the application form, is composed from three sections:

1. Methodology for collecting the content of TEXMEDIN digital library
2. Digital library structure
3. Valorisation of the TEXMEDIN digital library

First section describes the common criteria for the selection of the items that will be inserted in the digital library. Second section describes the structure of the database and the software application that will be used from the final users to access the items of the digital library. And finally in the last section there are some proposals, on the way the digital library can be made available and known not only to young stylist & designers that will participate to TEXMEDIN design context but also to other users.

1. Methodology for collecting the content of TEXMEDIN digital library

Of all factors, collection development is most closely tied to an organization's or project's own goals and constituencies. Collection builders should be able to refer to the mission statement of their organization or project and articulate how a proposed collection furthers or supports that mission. The target audience(s) for the collection must be identified but unexpected uses and users should not be excluded. Following the above statements the criteria that will guide the selection process of the content of TEXMEDIN digital library can be grouped in four categories:

1. Criteria according to project objectives.
2. Criteria according to museums/partners specialization and priorities
3. Criteria in order to collect item representing better the identity features, T&A sector evolution and knowledge of each territory.
4. Criteria according to possible future uses and users.

Further more to the above-mentioned criteria for the selection process, facing the intellectual propriety rights issue, the partners decided that each of them is responsible for its inserted items. In order to be clear to the users of the library that when using some of the items of the library and especially the images should consider the intellectual propriety rights, there will be an indication field on each item informing the user if the item is protected or not.

1.1 *Criteria according to project objectives*

TEXMEDIN digital library is the main outcome of the third component of the project, one of the two technical components. The objective of the third component "Integrated Knowledge-base" is first of all to identify, share and exploit the creative heritage and productive know-how of the T&A sectors in partners' territories and secondly to support the Inspiring lab. To reach these objectives, the platform of digital library, from one hand must be a tool of representation and consultation from everybody that it is interested in T&A heritage and from the other hand to be attractive for young designers, stylists, fashion schools and textile companies or any other possible user of the Inspiring lab. The users (designers, researchers or entrepreneurs) that will search the database expect to find information (e.g. high resolution images, historical references, colourways, technical data sheets) and ideas for their work according to their specific needs.

The users of the library are two distinct groups with different background and needs:

Cataloguers: this category includes museums partners, other textile and fashion museums, private collections and archives, company archives.

Final users: first of all this category includes fashion designers, fashion and textile enterprises, fashion schools; it includes also historians, archivists and researchers in the field of textile and costumes.

The selection of the items must support the needs of these two categories of users, not only with the item itself, but also with the information provided about it. The selection process requires that there is adequate information about the items in the library to enable retrieval and understanding of the resource. A minimum amount of data is specified (which will be presented in second section of the document), which are necessary for each item. There is also the possibility that the technical partners of the project can identify missing information through laboratory tests, when feasible.

1.2 Criteria according to museums/partners specialization and priorities

As the major part of the items of the library will be collected from the three museums and the partners that own an archive or collection, is obvious that the selection will be made according to the specialization and possibly by the priorities set from each partner's organisation. Thus, the museums will select their own items (fabrics, sample books, garments, accessories etc.) choosing the most representative from their collections.

The specialization of the partners that will introduce items in the TEXEMEDIN digital library was documented at the early beginning of the works of component three and is presented hereafter:

Peloponnesian Folklore Foundation:

The textile collections of the Peloponnesian Folklore Foundation comprise from more than 27.000 items that cover mainly the time period from 18th until the 20th century. Their major part concerns local costumes and objects of fashion, but includes also an important number of embroideries, woven items, laces, liturgical vestments of the Orthodox Church, Koptic textiles etc.

Prato Textile Museum:

The main Museum mission is to conserve its collections, both historical and contemporary. The collections include over 6000 ancient fragments, more than 250 sample books, around 1700 fashion plates, around 1000 contemporary fabrics, plus clothing and machinery.

CARPIFORMAZIONE srl:

The archives of CARPIFORMAZIONE are composed by 1600 Fashion trends books (from the seventies to 2005), 25.000 fashion magazines (from 1950 to 2005) more than 80 magazines titles represented, 300.000 images of the "prêt à porter" fashion shows (pictures, slides, DVD) from 1980 to 2005, 20.000 knitwear stitches samples (divided per typology and season) from the seventies to the end of the millennium, 30.000 fabric samples (from the fifties to the nineties) and fabric /knitwear samples, accessories images, product research and documentation received by donation.

CENTRE DE DOCUMENTACIÓ I MUSEU TÈXTEL:

The CDMT has more than 20,000 pieces representing two thousand years of the world's textile history. Its collection of Mediterranean fabrics spans pre-industrial times and the industrial era (nineteenth and twentieth-century pieces from the Vallès region and from Catalonia as a whole). It also has pieces from China, India and pre-Columbine America, liturgical garments *and* complements. The CDMT has a notable set of original designs from the twentieth century and point cards for jacquard looms. The Centre's excellent collection of Art Nouveau textiles and fabrics brings together masterpieces by artists, designers and Catalan firms of the early nineteen hundreds.

The library will be built and used not only for the project partners but also by other bodies such as textile and fashion companies, textile archives and other museums collections external to the project. These new 'actors', while they enter their items in the database, will chose them according to the same criteria shared among the partners.

1.3 Criteria in order to collect item representing better the identity features, T&A sector evolution and knowledge of each territory

The T&A sector is differentiated on each territory and its evolution followed different ways. The items selected will represent someway the cultural, social, historical and environmental, characteristics of each region and how these characteristics led to the development and the specialization of the sector on each region. In a general overview, Prato textile Museum will chose mostly woolen samples from historical sample books, since this production it's the most significant. The Textil Museum of Terrassa will give importance mainly to it's Modernist collections, historic textiles and pattern books of Catalan industry while the Peloponnesian Foundation will take attention to it's ethnological pieces. Carpiformazione will contribute with samples of knit and suggestions/proposals to use them, considering the tradition of its territory, mainly constituted by knitwear companies In addition to these items each institution will be free to choose other typologies from its collections.

1.4 Criteria according to possible future uses of the knowledge base

According to the "knowledge based component", the digital library is a tool not only limited to the project objectives and prerequisites, but it is open to further applications and developments, in a sustainable way. This means that the digital library will be developed, considering that it could be used after the end of the project, for training purposes, for collection, digitalization and valorisation of the textile heritage owned by enterprises, museums, associations and other archives. The purpose will be to enrich it adding more collections and items for consultation from researchers.

This is a very important feature of the TEXMEDIN digital library that guarantees its permanence and utility outside the boundaries of the project. The choice to work on an open source platform allows keeping alive the digital library after the project completion with very low costs of maintenance.

2. TEXMEDIN digital library

TEXMEDIN digital library will represent items, which are mostly coming from museums. The development of the database will follow the basics of the work already done in similar on line databases. Further more the objectives of the project require the enrichment of the data with more information for each item. This fact together with the heterogeneity of the items leads to keep a minimum of basic data fields in compliance with the European standards (Europeana and Dublin core) and around these fields to build a number of tables to be used for in-depth analysis. In this way we have the freedom to use only the data appropriate or available for each item having the possibility to add more information anytime in the future. In addition the creation of more files with new data can be done without significant effort when desired.

The digital library is composed from three distinct elements:

1. The items' database
2. The user interface and
3. The online guide to use and exploit the digital library

The language of the digital library will be the English language, but the database will be developed in way that permits translation in all five languages of the partners (Italian, Greek, Spanish and French). The translation of the menus and the field names can be made by the programmers using some excel files with the translation in the different languages and the translation of the actual content ca be made by the users inserting the data of each field in the corresponding language.

For the database MySQL Community Server 5.1 will be used and the user interface will be developed using php, javascript and sql.

2.1. *TEXMEDIN Vocabulary*

When developing a digital library in which the use of technical terms is required, it is very important to define from the begging a vocabulary of these technical terms. In this way all people who will use the same term in a correct way and with its correct meaning. The process of data insertion can be made much faster and mistakes can be easily avoided. Moreover technical terms should not create confusion to the final users, but on the contrary should facilitate them when searching the library.

The working group for the development of the digital library, decided to create a vocabulary of technical terms that will include all the necessary terms for the description of the items of the library. All technical terms will be inserted in the database to specific files that will be created before the data insertion phase. The users when the will insert an item in the library and they have to describe it using a technical tern they will simply select the term from a list. This way the risk of mistakes that it is not very easy to be discovered is minimised and the data insertion process becomes faster. A simple procedure to insert additional terms to the vocabulary will be also established. Anybody from the partners that wants to add a new term has to

inform the other partners for his intention and if there is no objection the insertion will be made from that partner directly to the corresponding database file.

In the TEXMEDIN vocabulary will be used terms to describe the following parameters of a textile item:

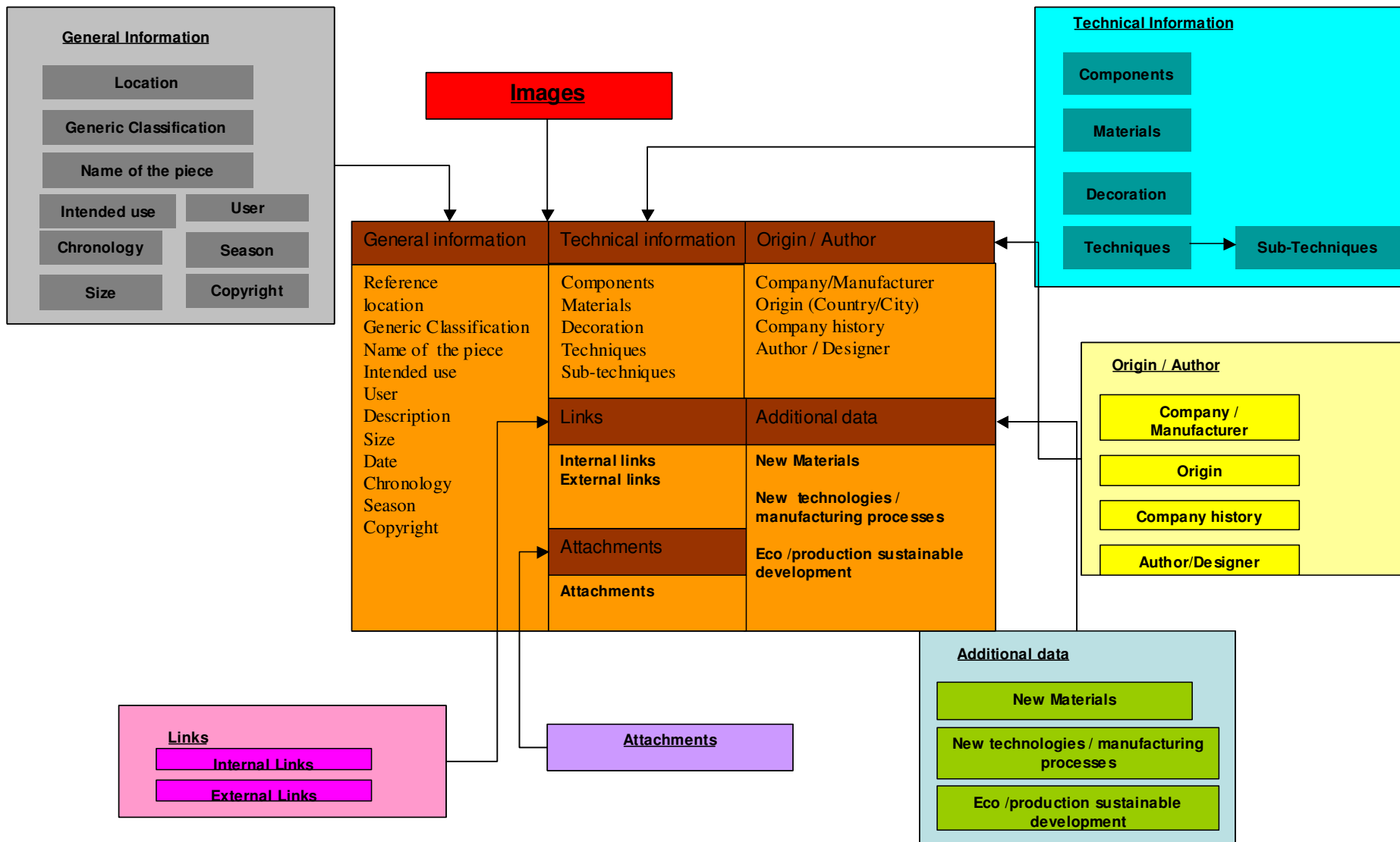
Location	Components
Generic Classification	Materials
Name of the piece	Decoration
Intended use	Techniques
User	Sub- Techniques
Chronology	Origin - Country
Season	Origin – Region/City

An explanation of the above fields is given on the following paragraphs.

2.2. Database structure

In the following diagram is presented the data base structure of the TEXMEDIN digital library. The database fields describing an item are grouped in seven categories of information:

1. General information: the basic data of the item (description, Name, Use, dates etc)
2. Technical information: technical information of the item (composition, decoration, production techniques, components in case of costumes etc)
3. Origin /Author: information about the origin of the item the designer or the company which produced the item and, if exists, historical data about the company.
4. Links: useful links on other internet locations or to another item of the digital library can be added here.
5. Attachments: any kind of attachment that can give additional information for the item or any other information that is considered useful to the user.
6. Images: one or more images of the item can be inserted.
7. Additional information: information concerning new manufacturing processes, new materials, regulations etc.



Methodology for the collection and valorisation of the T&A heritage

2.2.1. Data Types

General Information

FIELD NAME	FIELD TYPE
Reference	Free text - required
Location	Controlled List - single select - required
Generic Classification	Controlled List - single select - required
Name of the piece	Controlled List - single select - required
Intended use	Controlled List - single select - required
User	Controlled List - single select - required
Description	Free Text
Size	Free Text with a measurement regulation
Date	Free Text
Chronology	Controlled List (single select)
Season	Controlled List - single select - required
Copyright	Controlled List - single select

Technical Information

FIELD NAME	FIELD TYPE
Components	Controlled List - multi select
Materials	Controlled List - multi select
Decoration	Controlled List - multi select
Techniques	Controlled List - multi select
Sub- Techniques	Controlled List - multi select

Origin / Author

FIELD NAME	FIELD TYPE
Company / Manufacturer	Free Text
Origin - Country	Controlled List - single select
Origin – Region / City	Controlled List - single select
Company History	Free Text
Author Designer	Free Text

2.2.2. Database fields descriptions

General Information

FIELD NAME	DESCRIPTION	EXAMPLES
Reference	The unique code given to the item from each partner.	
Location	The current location of the item	MUSEO DEL TESSUTO (Prato/Italy), P.F.F. (Nafplion/Greece), CDMT (Terrassa/Spain), CARPIFORMAZIONE (Carpì/Italy)
Generic Classification	The general category of the item	Accessories, Costumes, Garment, Original designs, Sample books, Textiles...
Name of the piece	The specific category of the item.	Bag, Curtain, Costume, Dress, Samples of yarn, Skirt, Tablecloth...
Intended use	The use for which the item was produced or made for.	Apparel, Clothing industry, Ceremonial costume, Folk costume, Household linen, Knitting industry, Performance costume, Textile industry...
User	The person that uses the item	Child, Men, Unisex, Women...
Description	The description of the item	
Size	The dimensions of item	8x8 cm, 7,3x7,3 cm

Chronology	The time period the item was produced.	Centuries before 19 th century and decades afterwards.
Date	More accurate production time, if available.	
Season	The season the item is used.	Winter, Autumn, Summer, Spring, Annual...
Copyright	The IPR status of the item.	Protected, Not protected

Technical Information

FIELD NAME	DESCRIPTION	EXAMPLES
Components	Elements composing the item.	Beads, Bows, Buttons, Feathers, Pearls, Silk ribbons...
Materials	Raw materials used for the fabrication of the item	Acrylic, Artificial fibers, Blended wool, Cotton, Leather, Polyester, Silk, Wool...
Decoration	The decorative elements of the item.	Abstract motifs, Animal motifs, Animal skin, Effects of colour
Techniques	Main manufacturing process used for the fabrication of the item	Spinning, Knitting, Sewing, Weaving, Printing...
Sub- Techniques	Specific manufacturing process followed	Plain knit, warp knitting, roller printing, velvet...

Origin / Author

FIELD NAME	DESCRIPTION	EXAMPLES
Company/ Manufacturer	The company or the person manufactured the item.	
Origin - Country	Country of origin	Spain, France, Italy, Greece...
Origin – Region / City	City or region of origin	Catalunya/Terrassa, Chioniomodi/Corinthia/Peloponne

		se, Prato...
Company History	Historical information about the manufacturer (company or person) of the item	
Author Designer	The designer or the author of the item	

2.2.3. Additional tables for each item

Around the basic data of the item a number of tables will be developed containing additional data. The information contained on these files will enrich the item with additional information of various types. The aim is to give the final user of the library a complete idea not only, of the item and its characteristics, but also information such as the cultural, social, historical and environmental information about the period and the territory where the item was produced and used, the evolution of the technology and fashion or how an item inspired a designer to create a new product. Information about new materials with advanced properties which textile industry is using today and modern environmentally friendly production technologies, regulations and legislation for consumer protection can help a lot young designers and stylists, who will participate in the Inspiring Lab contest to their creations.

To support the above issues the additional information that the library will provide the final user will be the following:

Links

Two types of links can be connected with each item of the TEXMEDIN digital library:

- ❖ **External links:** useful resources from the web where the user can find additional information related to the item.
- ❖ **Internal links:** a way of connecting together two or more items of the library that are somehow related to each other.

Attachments

One or more attachments for each item of the library can be inserted here. Attachments can provide additional information for a specific item of the library and can help the users who are looking for an in depth analysis. Typical examples of attachments can be the Technical sheet or the Technical design of a fabric. Text or photos taken from old magazines or archives could be also used as attachments to give to a fashion designer or to a researcher an overview of the history of fashion for a certain period and provide information about similar fabrics or other items and their applications for the same period.

New technologies / manufacturing processes

One of the of the project's objective is to provide an online tool aiming to encourage young stylists and designers to creatively reinterpret textile and clothing heritage and exploit the relative know-how according to a contemporary approach. TEXMEDIN digital library has to provide its users with an overview of new technologies and production processes that are currently used in the textile industry and in many cases are completely different from the ones used to produce most of the items of the library. Young designers and stylists should be aware about new textile technologies and manufacturing processes and the possibilities they offer them to convert their designs in real products. With the information provided in this section of the library the user will understand how the original item of his interest or a similar one, can be produced now and which are the changes due to the technology evolution that must take into consideration when designing a new product.

New materials

Last decades the textile industry in collaboration with scientist from other disciplines developed a big number of new materials to be used in the production of clothes and other textile products. In many cases these new materials have characteristics that can give the final product advanced properties that traditional materials used up to now cannot provide. All these new materials (fibers, yarns, fabrics) replaced traditional materials the textile industry was using for centuries not only because of their properties but also because of their lower cost and their behaviour during the manufacturing processes. There is also a generation of new textile materials like conductive fibers and yarns; materials that can change their colour or shape according to external stimulus and modern designers are using them to create special effects.

All these advancement on the raw and auxiliary (dyes, chemicals for finishing etc.) materials that textile industry is currently uses or can use will be available on this section of the library.

Eco / production sustainable development (regulations, recycling)

In this table there will be some references to subjects regarding environment protection during production process, possibilities for using materials that can be recycled, regulations on the use of chemicals and finally regulations and legislation for user protection according to final use and users of the textile items.

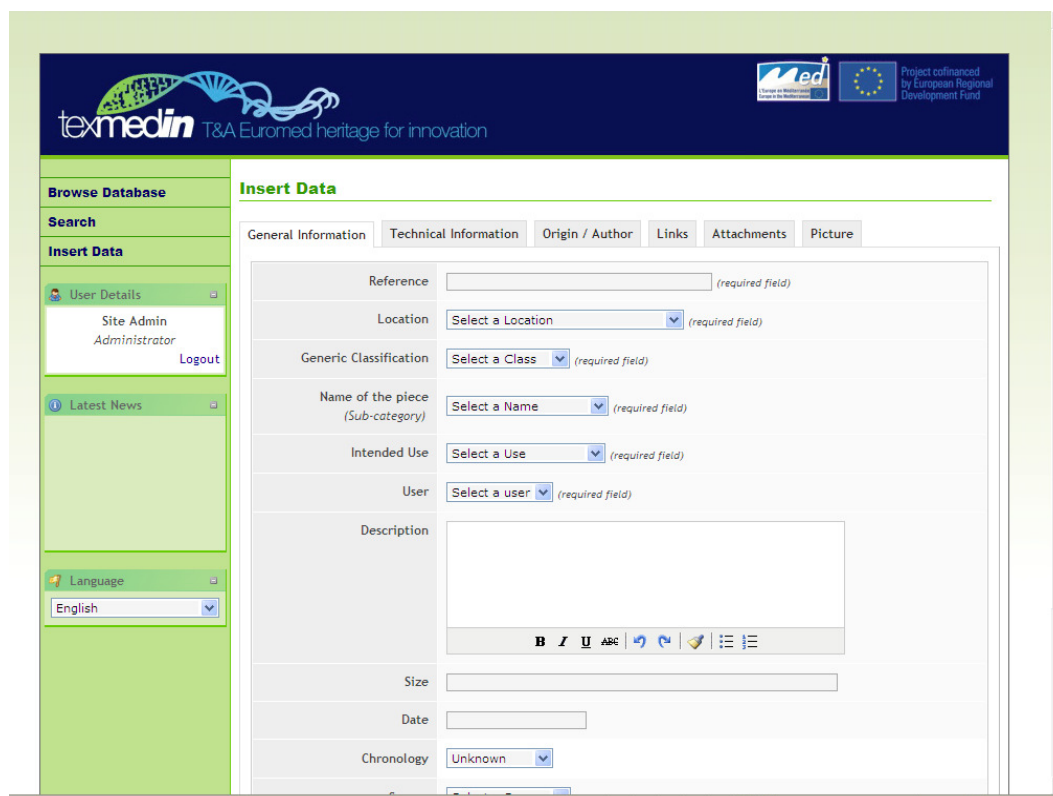
2.3. User Interface

The user interface is composed from two parts. One is the interface for data insertion edit and update. This part will be password protected. Each one of the partners will have its own password and will be permitted to modify only the items of the database that has inserted. The second part will be the online pages that the final user will use for browsing and searching the digital library. This part of the library will be accessible by everybody that wants to use the library without any restriction.

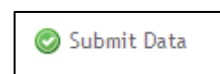
2.3.1. Data insertion interface

To facilitate data insertion from project partners this section will be organised in tabs. After logging in to this area the page for data insertion will be available to the user.

The main screen for data insertion will look with the one in the following picture.



The selects a tab and inserts the necessary information to each field without changing any page. In every tab there is a submit button that saves all unsaved data in all tabs. Anytime the user wants can cancel the insertion by a selection in the menu.



There are several types of data to be inserted. Data selected from a list (single or multiple selection), text inserted in text fields and images or attachments uploaded in the database.

Selection lists

For single selection lists there will be a drop down list from where the user will select the appropriate data.

Generic Classification	Select a Class (required field)
Name of the piece (Sub-category)	Select a Class Accessories Costumes Garment Original designs Sample books Textiles
Intended Use	Textiles (required field)
User	New (required field)

Inserting new data in the list can be made pressing "New" in the list and a text field will appear where the new value can be inserted.

Generic Classification	New (required field)
	New Class : Here I will put the new value

Using this mechanism the user uses the same screen for both the selection from a list and for feeding the list with new data.

For multiple selection lists a similar mechanism will be used as shown in the following picture

Materials	Available Materials Alpaga Angora Artificial fibers Camel hair Fiber Blend Flax Fur Glass Gold	Selected Materials Acrylic Cotton
New Materials, separated by commas :	<input type="text"/>	

Text fields

Two types of text fields will be used. Fields limited to 255 characters and fields with unlimited size.

For the fields with limited size a simple text box will be provided for data insertion.

Size	<input type="text"/>
------	----------------------

For text fields with unlimited size a more advanced text area will be provided that permits also the use of some simple formatting commands.

Description	<div style="border: 1px solid #ccc; height: 100px; width: 100%;"></div> <div style="border: 1px solid #ccc; background-color: #f0f0f0; padding: 2px; text-align: center;">B <i>I</i> <u>U</u> ABC ↶ ↷ 📁 ☰ ☱</div>
-------------	--

Attachments

In the attachments area any type of file (document, picture, audio etc.) can be uploaded.

File Attachments	
File	<input style="width: 90%;" type="text"/> <input style="width: 10%; background-color: #ccc;" type="button" value="Browse..."/>
Description	<div style="border: 1px solid #ccc; height: 100px; width: 100%;"></div> <div style="border: 1px solid #ccc; background-color: #f0f0f0; padding: 2px; text-align: center;">B <i>I</i> <u>U</u> ABC ↶ ↷ 📁 ☰ ☱</div>
<input style="background-color: #e0e0e0; border: 1px solid #ccc;" type="button" value="+ Add File"/>	

Links

Here the user can insert as many links to external resources considers necessary.

External Links	
URL	<input style="width: 90%;" type="text"/>
Description	<div style="border: 1px solid #ccc; height: 100px; width: 100%;"></div> <div style="border: 1px solid #ccc; background-color: #f0f0f0; padding: 2px; text-align: center;">B <i>I</i> <u>U</u> ABC ↶ ↷ 📁 ☰ ☱</div>
<input style="background-color: #e0e0e0; border: 1px solid #ccc;" type="button" value="+ Add Link"/>	

And also has the option to relate the item with one or more items, which have some common characteristics.

Internal Links

Available Items		Selected Items
PFF13.1		
PFF13.2	>	
PFF13.3	>>	
PFF13.4	<	
PFF13.5	<<	
PFF13.6		
PFF13.7		
PFF13.8		
PFF13.9		

Images

For each item one or more pictures can be uploaded here.

Image Upload

Please select the image to upload and press "Add Image"

File:

2.3.2. Final user Interface

The final user interface (what the final user will see when accessing the knowledge base) will be as simple as possible and will follow common rules for the development of such type of applications.

The different type of information will be presented opening tabs from the upper menu of the screen. An effort will be made to have all data visible in one screen, avoiding the up down or left right scroll.

2.3.3. Searching the database

The searching mechanism of a digital library that contains items fro textile heritage is a very important issue. Searching must be made in a simple way giving the possibility to the user to find very fast what is looking for. The fields, which will be used for searching, must have a clear meaning for the user and not to confuse him.

In TEXMEDIN digital library the searching will be possible using the following nine database fields:

- Reference
- Location
- Generic Classification
- Indented use
- User
- Chronology
- Material
- Origin
- Technique

An explanation for each field will be available online to help the final user when using the search mechanism of the library.

To avoid empty screens (zero search results) the user, when setting each one of his search criteria, will be informed on how many items are available in the database.

Search

Reference	Reference	Chronology	Select Chronology
Location	CDMT (Terrassa/Spain) (200 items)	Material	Select Material
Generic Classification	Select Classification	Origin	Choose Country
Intended Use	<ul style="list-style-type: none"> Select Classification Select Classification Accessories (14 items) Costumes (73 items) Garment (0 items) Original designs (30 items) Sample books (65 items) Textiles (18 items) 	Technique	Select Technique
User			

200 items found. Showing Items #1 - #12, Page 1 of 17

<< 1 2 3 4 5 >>

Except this advanced search that uses more than one searching criteria, a searching using a single field will be also available from the "Browse database" screen.

Browse Database

Browsing by : All

- All
- Location
- Name of Piece
- Generic Classification
- Intended Use
- User
- Season
- Country
- City
- Chronology
- Material
- Decoration
- Component
- Technique
- Subtechnique

41 items found. Showing It

<< 1 2 3

Browse Database

Browsing by Location : All

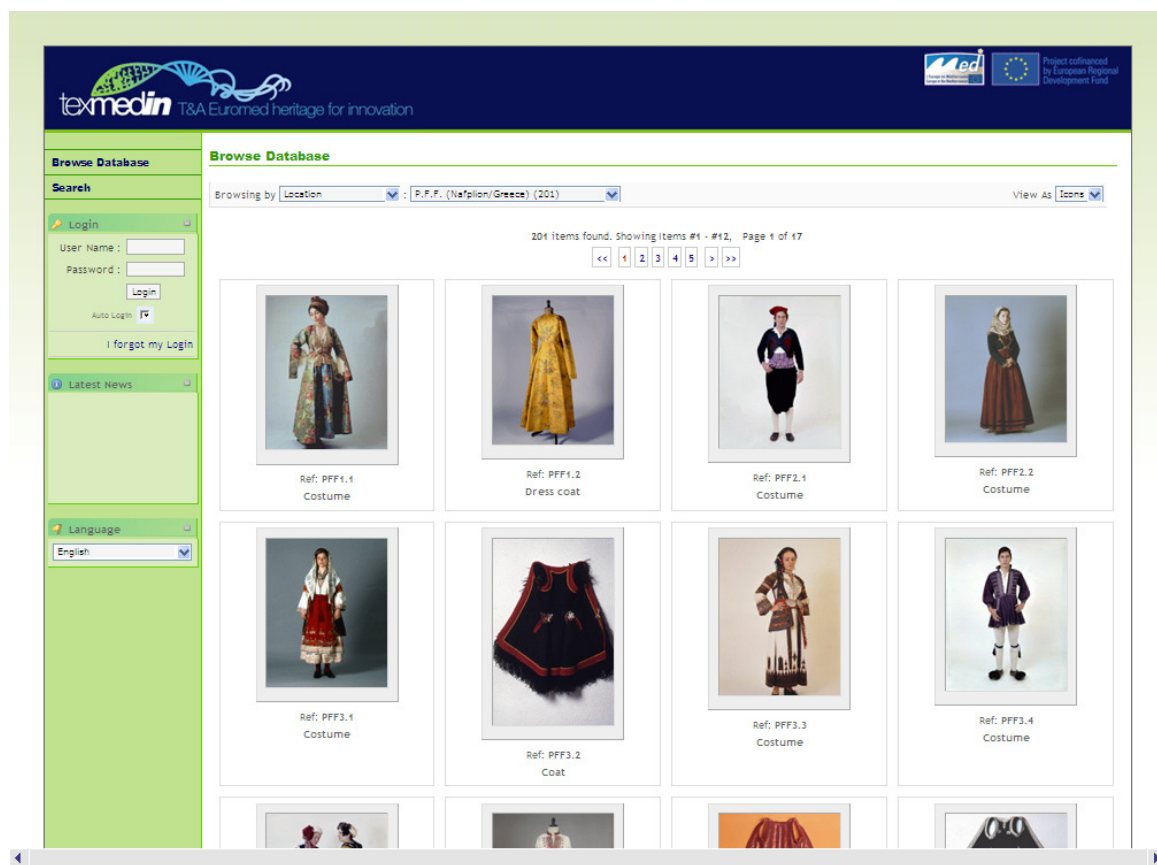
- All
- CDMT (Terrassa/Spain) (200)
- 5. CARPIFORMAZIONE (Carpi/Italy) (47)
- P.F.F. (Nafplion/Greece) (201)
- MUSEO DEL TESSUTO (Prato/Italy) (93)

1 of 46

2.3.4. Browse database

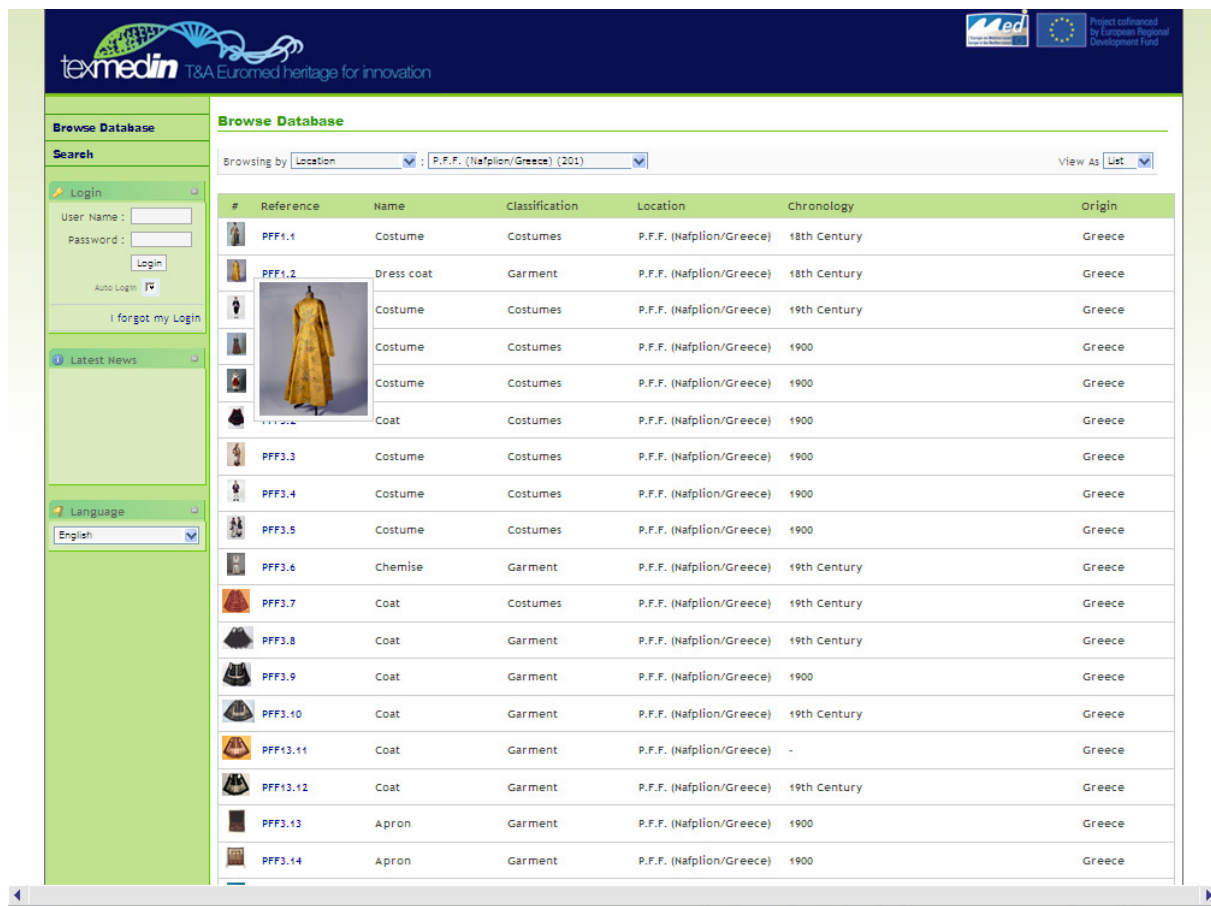
Browsing can be done in two modes:

- ❖ using a list of items or
- ❖ using the icons of the items:



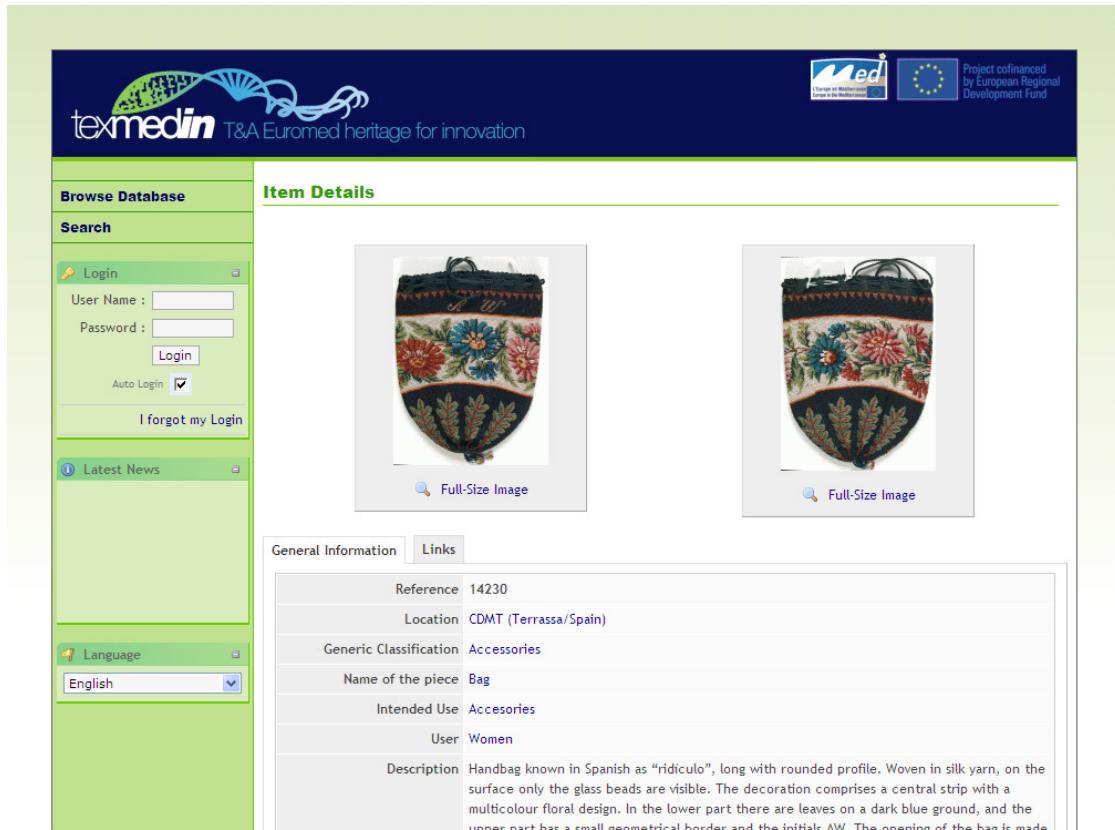
The results always will be presented in pages containing a standard number of 25 items on each page. When using the browse with list method the small pictures are enlarged when putting the mouse pointer on it.

When you press the item's icon, the screen with the details of the item opens. Here there is a section with the different photos of the item and a section with the information about the item organised in tabs.



The screenshot displays the 'Browse Database' page of the texmedin website. The interface includes a search bar, a login section, and a table of items. The table is filtered by 'Location: P.F.F. (Nafplion/Greece) (201)'. The table columns are: #, Reference, Name, Classification, Location, Chronology, and Origin. A large image of a yellow dress is shown next to the first few rows of the table.

#	Reference	Name	Classification	Location	Chronology	Origin
	PFF1.1	Costume	Costumes	P.F.F. (Nafplion/Greece)	18th Century	Greece
	PFF1.2	Dress coat	Garment	P.F.F. (Nafplion/Greece)	18th Century	Greece
		Costume	Costumes	P.F.F. (Nafplion/Greece)	19th Century	Greece
		Costume	Costumes	P.F.F. (Nafplion/Greece)	1900	Greece
		Costume	Costumes	P.F.F. (Nafplion/Greece)	1900	Greece
	PFF1.3	Coat	Costumes	P.F.F. (Nafplion/Greece)	1900	Greece
	PFF3.3	Costume	Costumes	P.F.F. (Nafplion/Greece)	1900	Greece
	PFF3.4	Costume	Costumes	P.F.F. (Nafplion/Greece)	1900	Greece
	PFF3.5	Costume	Costumes	P.F.F. (Nafplion/Greece)	1900	Greece
	PFF3.6	Chemise	Garment	P.F.F. (Nafplion/Greece)	19th Century	Greece
	PFF3.7	Coat	Costumes	P.F.F. (Nafplion/Greece)	19th Century	Greece
	PFF3.8	Coat	Garment	P.F.F. (Nafplion/Greece)	19th Century	Greece
	PFF3.9	Coat	Garment	P.F.F. (Nafplion/Greece)	1900	Greece
	PFF3.10	Coat	Garment	P.F.F. (Nafplion/Greece)	19th Century	Greece
	PFF3.11	Coat	Garment	P.F.F. (Nafplion/Greece)	-	Greece
	PFF3.12	Coat	Garment	P.F.F. (Nafplion/Greece)	19th Century	Greece
	PFF3.13	Apron	Garment	P.F.F. (Nafplion/Greece)	1900	Greece
	PFF3.14	Apron	Garment	P.F.F. (Nafplion/Greece)	1900	Greece



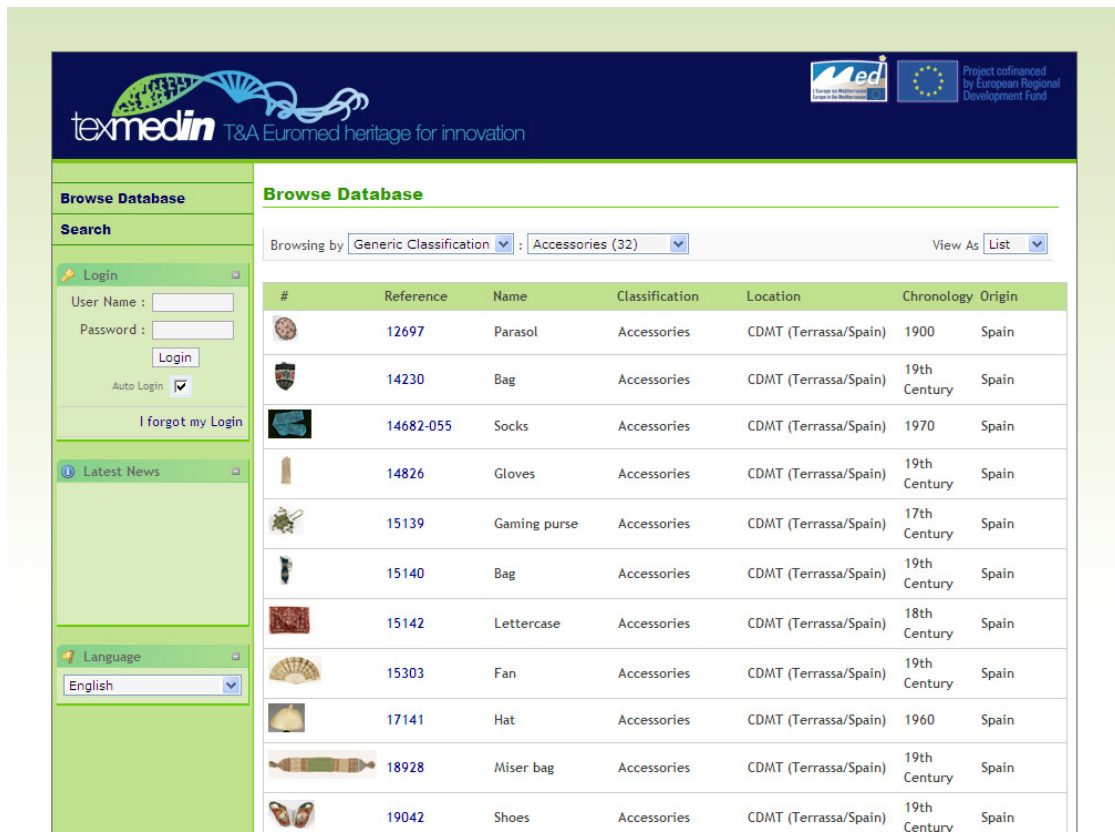
The screenshot shows the 'Item Details' page for a handbag. The page layout includes a top navigation bar with the 'texmedin' logo and project funding information. On the left, there is a sidebar with 'Browse Database', 'Search', 'Login' (with fields for User Name, Password, and a Login button), 'Latest News', and 'Language' (set to English). The main content area features two images of the handbag, each with a 'Full-Size Image' link. Below the images is a 'General Information' table with the following data:

General Information	Links
Reference	14230
Location	CDMT (Terrassa/Spain)
Generic Classification	Accessories
Name of the piece	Bag
Intended Use	Accessories
User	Women
Description	Handbag known in Spanish as "ridiculo", long with rounded profile. Woven in silk yarn, on the surface only the glass beads are visible. The decoration comprises a central strip with a multicolour floral design. In the lower part there are leaves on a dark blue ground, and the upper part has a small geometrical border and the initials AW. The opening of the bag is made

To facilitate the fast navigation of the user to items with similar characteristics when pressing the information in blue, the application makes a filter of the items with the same value and a list with these items opens. If I press to the word Accessories next to Generic Classification of the previous picture I will get the following result:

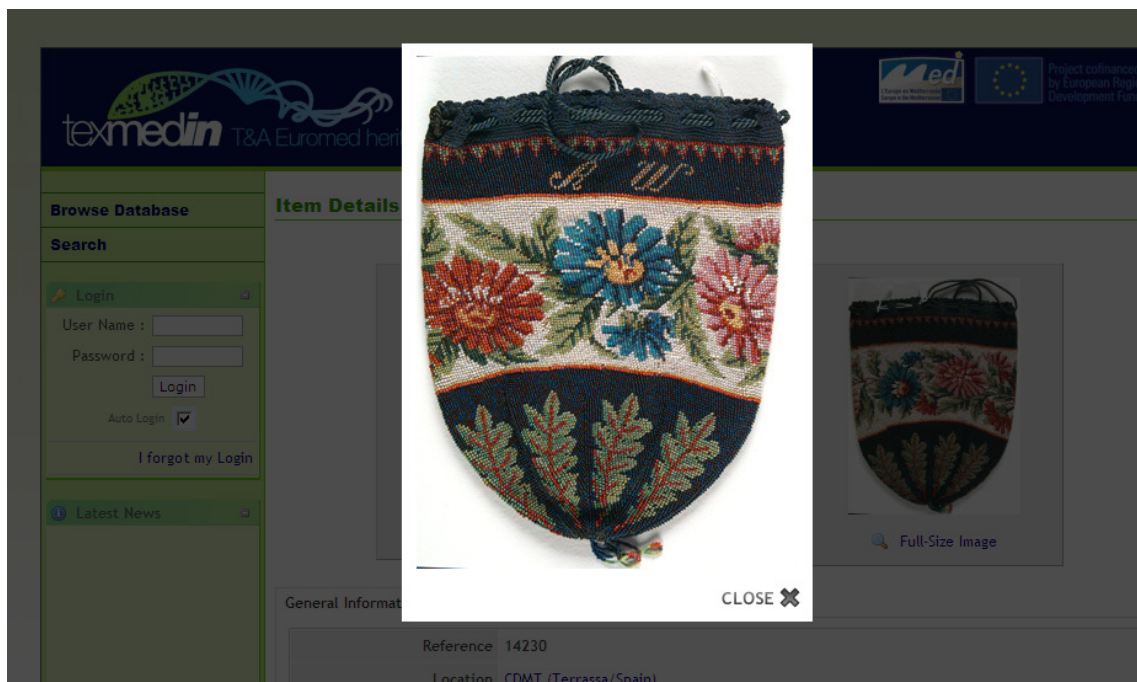
Which is the list of all the items that have as Generic Classification the value "Accessories"

In this way it is very easy and fast for the user to select and see all the items of the database, which have something in common, with just a click of the mouse.

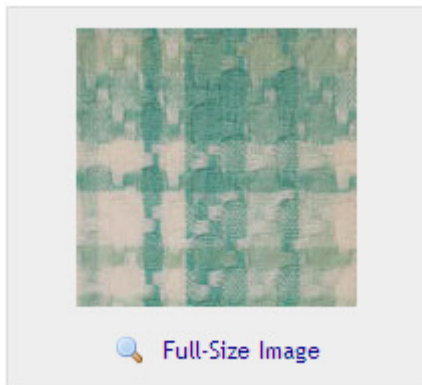


2.3.5 Photos of the item

When the user press the photo of the item the photo is enlarged for better view.



If the user needs an even more detailed view of the picture he can press "Full Size image".



and the photo in its original size will open in a new window



2.3.6. User's Themes

Young designers and stylist, in the context of Inspiring Lab, will use TEXMEDIN digital library searching for inspiration coming from the items of the database. To facilitate their interaction with the library, the possibility for each user to create its own theme selecting different items will be given. In this way items previously used can be easily reached each time the user is accessing the library.

3. Valorisation of the Knowledge Base

One of the outcomes of TEXMEDIN project is the digital library which will identify, share and exploit the creative heritage and productive know-how of the T&A sectors in partners' territories and will support the Inspiring Lab component of the project. It is all partners' intention not to limit the use of TEXMEDIN digital library inside the projects boundaries but to make it also available to other actors like textile museums, fashion schools, textile companies, archivists, researchers or any other possible user that is interested in textile heritage.

TEXMEDIN digital library will be one of the tools that young designers and stylists, who will participate in the TEXMEDIN design contest, will use. The communication plan that will be realised in order to promote the contest will be also the tool of making the digital library known to a wider audience. The aim of attracting users different from ones participating in the contest requires more actions. Some of these actions are already defined in the project's work program and include publications and leaflets dedicated to component 3 and particularly to TEXMEDIN digital library.

Effort will be made by all partners to use their daily communication activities to promote the use of the digital library. Further more some extra communication activities can be also adopted during project implementation but also after its completion for the promotion of the digital library:

- ❖ Organisation of open days to use the library in a dedicated space inside Museums.
- ❖ Experimental workshops with schools and students supported by a designer.
- ❖ Presentation of the library in meetings with entrepreneurs.
- ❖ Newsletters and Leaflets (digital or paper) addressed to museums, schools, enterprises and textile associations.